



Capricorn Coast OCC

Proudly present

GRAND PRIX ROUND 5- 2019

RACE PROGRAM AND MAPS ONLY

(This is to be read in conjunction with the AOCRA Race Rule and Regatta Administrative Guide)

Saturday 27th July 2019

to be held at

Fishermans Beach

Emu Park



RACING PROGRAM

IMPORTANT NOTICE

The Race Program will run on time, or at the discretion of the Race Director. Clubs must provide adequate canoes for competitors in each division. Please be ready for your event. The Race Director will not wait for crews to get to the START LINE.

Please note that races may be brought forward on the day so please notify all competitors that it is important to listen for changes over the PA system.

All canoes are required to carry one PFD per paddler, and must be easily accessible.

Always be Sunsmart.

Race Director: Soozi Wilson Assistant Race Director: John Jennings

THE VENUE

The regatta will be held at Fisherman's Beach, Emu Park. The Senior OC6 marathon 19km course starts at Fisherman's Beach Emu Park (via the car park at the Eastern end of Hill Street) and finishes back at Fisherman's Beach. The OC1 & OC2 downwind race will start at Emu Park and finish at Ross Creek in Yeppoon.

PARKING

Parking for competitors is available at Bell Park, Emu Park.

TRAILER PARKING

There is room for canoe trailers in the car park at Emu Park Boat Ramp.
There will be no OC6 trailer parking in the main street of Emu Park.

REFRESHMENTS

A variety of food and beverages will be available at the race venue.
A variety of merchandise will also be on sale.

JUNIOR PRESENTATIONS

Junior presentations will be held @ **TBC** commencing **at 6:30pm**

SENIOR PRESENTATIONS

Senior presentations will be held @ **TBC** commencing **at 6:30pm.**

ACCOMMODATION –

For suitable accommodation options please contact Capricorn Coast Visitor Information Centre on (07) 4939 4888 or visit www.capricornholidays.com.au We have listed a few options in [Emu Park and Yeppoon at the end of this programme.](#)

NOMINATION FEES

		Senior Paddlers	Juniors Paddlers
OC6	Per Crew Per Division Per Event	\$78	\$25 FLAT FEE PER REGATTA FOR JUNIOR EVENTS ONLY
OC1/2	Per Paddler Per Division Per Event	\$13	

CLUB NOMINATIONS

All clubs must lodge a CLUB NOMINATION with payment, performed online,

at www.aocra.com.au

Individuals wishing to compete in an OC1/2 event can lodge a "CLUB NOMINATION" with payment by your own credit card,

at www.aocra.com.au

All nominations close at **5pm Friday 12th Julyth, 2019**

Late nominations will be accepted with additional late fee of

\$5 per senior paddler for OC1/OC2 events

\$5 per senior paddler for OC6 events

TEAM and INDIVIDUAL NOMINATIONS

(ie the name of individuals eligible to paddle in each race in each division) ***must be lodged online at www.aocra.com.au no later than***

5pm Friday 19th July, 2019

If nominations are not received for certain divisions, the host club will organise to delete these from the schedule of events

Canoe Numbers Canoe numbers must be included in the “notes” section when registering.

Signing In for *OC6 events* clubs need to indicate:

1. Which individuals are in *each crew* for the upcoming race
2. The canoe number (and any identifying feature eg sponsor name)
3. Crew name (if applicable)

Signing In for *OC1/2 events* individuals need to:

1. Confirm the division is correct.
2. Indicate individual/s paddling
3. Canoe number (and any identifying feature eg colour of ama)

It would be appreciated if paddlers do not approach the Sign In desk until they have all of the above details.

Race Co-ordinator: **Soozi Wilson**

e-mail: info@capricornstar.com.au

ph: 0408755201

Secretary: **Kat Groves**

e-mail: kat.groves@bigpond.com

ph: 0422639702

REGATTA RACE PROGRAM

Saturday 27th July 2019

Sunrise: 06:34 Sunset: 17:33

High Tide: **3.18m** @ 4:41 Low Tide: **1.16m** @ 11:07 High Tide: **3.74m** @ 17:39

Time	Event	Distance
0615	Blessing Of The Fleet	
0630	Briefing: OC6 Senior Marathon @ Emu Park	
0700	All Divisions: Men - Open, Master, Senior Master, Golden & Platinum (start Fishermans Beach)	19km
0900	All Divisions: Women - Open, Master, Senior Master, Golden & Platinum (start Fishermans Beach)	19km
0715	Briefing: Junior OC1, V1 and OC2 events	
0730 - 1000	Junior All Divisions OC,V1 & OC2 U12/U16 OC1,V1 U14/U19 OC2 U12/U16 OC2 U14/U19 OC1,V1	2km/6km 3km/6km 2km/6km 3km/6km
1030	Briefing: Novice & Mixed - OC6 events	
1130	Novice (Open Mixed) & Mixed (Open)	11km
1300	Briefing: OC1, OC2, V1 and V3 Downwind	
1315	All Divisions: Men, Women & Mixed (Start Fishermans Beach and finish Ross Creek Yeppoon)	17km
1330	Briefing: Spirit of Aloha	
1400 - 1600	OC6 Junior OC6 "Spirit Of Aloha" Races – all divisions including minnows. (All located at Fishermans Beach) All divisions and clubs will be mixed into teams and compete in a series of fun novelty events scoring points towards a champion team. (More details at end of Programme)	Various Distances to suit age divisions from 1km Minnows – 6km U19

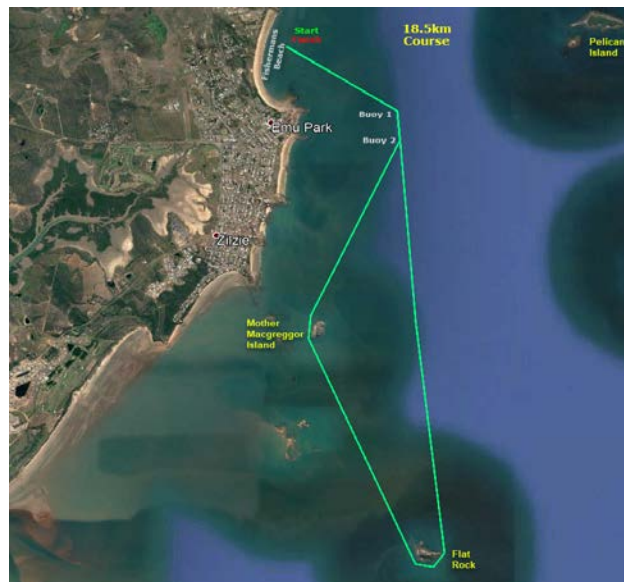
19km

OC6: All Senior Men's & Women's divisions

Depending on conditions the course will start at Fishermans Beach, Emu Park (access via the car park at Emu Park Boat ramp) and head in an easterly direction and turn Pelican Island in a clockwise direction. Head in a south easterly direction and turn Wedge Island in a similar fashion. Head back towards **buoy 1** and make an ama turn and finish at Fishermans Beach between the start finish buoys. Direction may change due to wind conditions on the day.



Alternative Course



11km

OC6: Novice & Mixed Marathon

The 11km course will start at Fishermans Beach, Emu Park (access via the car park at Emu Park Boat ramp) heading in an easterly direction canoes will right turn at **buoy 1** and **buoy 2**. Head south and turn anticlockwise around Mother Macgreggor Island back towards Fishermans Beach. Canoes will left turn at **buoy 2 & 1** and finish between the start finish buoys off Fishermans Beach.



17km

OC1, OC2, V1 & V3: Men, Women & Mixed

17km Downwind course will start at Emu Park boat ramp and finish at the entrance to Ross Creek in Yeppoon.

Canoes will start between two orange buoys off the Emu Park boat ramp and travel northwest along the coast towards Yeppoon. Paddlers are warned of possible submerged rocks at Retamata Rocks and Wreck Point Rocks.

The completion of the race will be at the entrance to Ross Creek between the rock wall and the beach. See image of finish line.



Race Finish Location



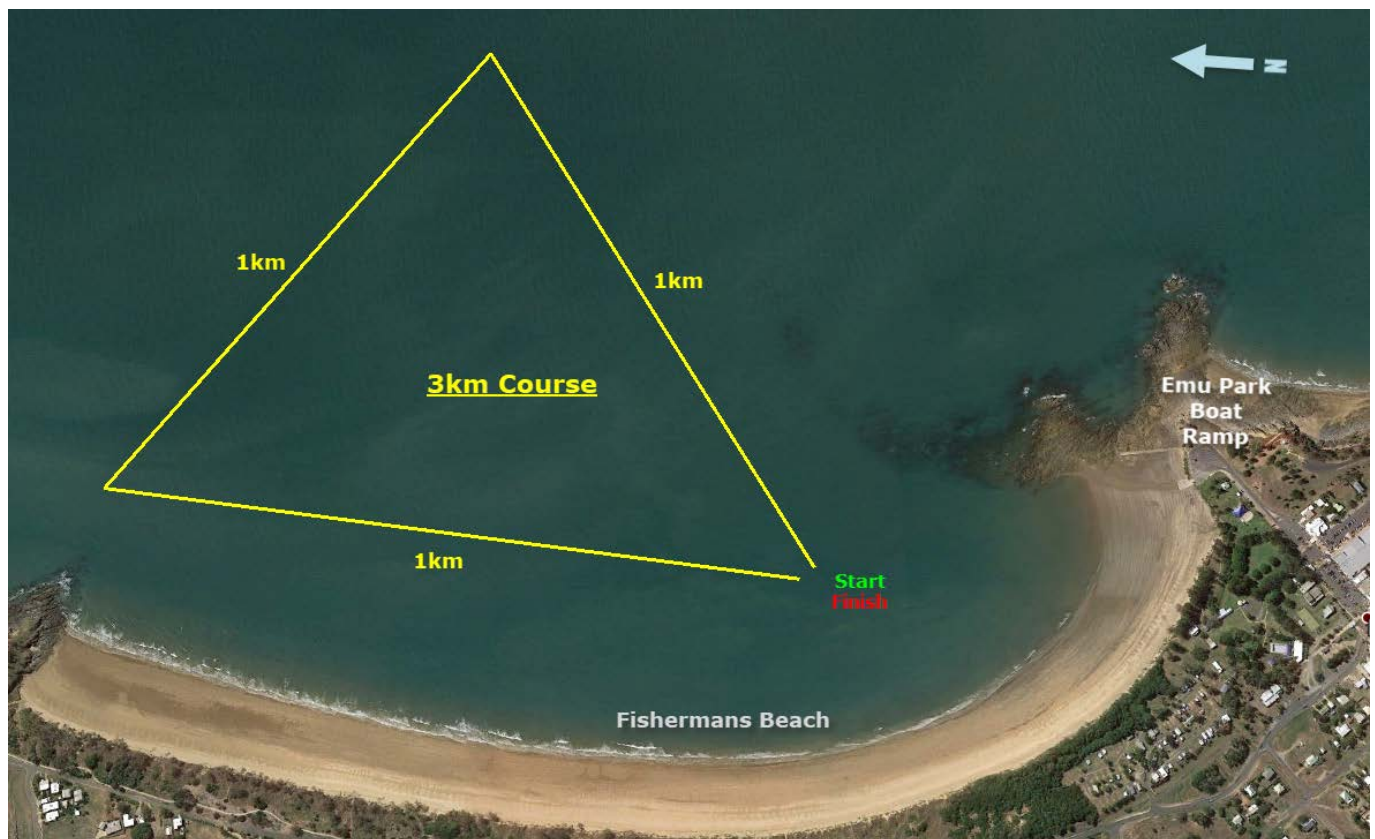
Various

OC6: Junior Events & Spirit of Aloha

2km Race: The 2km Race will include 2 laps of one side of the triangle course. (the side will be decided on the day depending on conditions)

3km Race: The 3km Race will include 1 lap of the triangle course. The race will be in an anticlockwise direction (ama turns).

6km Race: The 6km Race will include 2 laps of the 3km triangle course. The race will be in an anticlockwise direction (ama turns).



Spirit Of Aloha OC6 Races.

Depending on numbers and age mixes across the juniors from Minnows to U19, we will develop a series of events to best suit our Junior paddlers. If we have enough Juniors in any one age division to race as a club, we will run OC6 mixed races as follows:

Minnows 1km, U12 km, U14 3km, U16 6km, U19 6km Medals awarded for each race offered.

If not, we will mix up ages and clubs to form teams and run some novelty events such as Tug Of War, Spin The Canoe, Changeover Relay and Retrieve Ball. Teams will score points per event and medals will be awarded to highest scoring teams.

STRANDHOTEL
YEPPON



MEDAL PRESENTATIONS

TBC

**from 6:30 pm in the Upstairs Function
Room & Bar**

**(Junior and Senior medal presentations
will take place together)**

Meal Package \$

Ph:

Accommodation Suggestions – Emu Park is located 19km from Yeppoon. There are plenty of accommodation choices in Emu Park, close to the regatta site, or in Yeppoon, close to Ross Creek (the OC1/2/V1/3 finish line.)

Our Medal Presentation Dinner is located in TBC

Emu Park: within walking distance of regatta site:

Fishermans Beach Caravan Park 07 49396202

Emus Beach Resort and Backpackers 07 49396111

Endavour Inn 07 49396777

Yeppoon: The Coast Motel 07 49302325
Poinciana Caravan Park 07 49391601
Beach side Caravan Park 07 49393738

Between Emu Park and Yeppoon, along the Scenic Highway,
approx 5-10 minutes from both locations:

Big 4 Capricorn Yeppoon Caravan Park 07 49336144
Cool Waters Caravan Park 07 49396102
Kinka Beach Island View Caravan Park 07 49396284

Coffee and Shops: IGA, Coffee and food outlets are all within
close walking distance of the regatta site.

Toilets: Public toilets are located in Bells Park adjacent to
Fishermans Beach

While visiting our magnificent Capricorn Coast, why not check
out some of the other attractions in the area:

Emu Park: Bells Park Skate Park, ANZAC memorial Walk, The
Singing Ship

Yeppoon: Keppel Kracken and “Lagoons” foreshore water
park.

Great Keppel Island: Stay an extra day and take a ferry over to
Great Keppel Island. Ferry transfers Keppel Konnections
0484241505. Day trips Freedom Fast Cats 07 49336888
Accomodation The Hideaway 07 49392050

Add in our sponsors logos

